

Eclipse BoostPak

Packaged Gas Booster Systems

Series LD
Version 2

Low Flow Duplex

Parameter	Specification		
Low Flow Model Number	LD1010	LD1515	LD2020
Assembly Number	10024880	10024881	10024882
Outlet N.P.T.	1	1.5	2
Inlet N.P.T.	1	1.5	2
Minimum Flow (cfh natural gas) ^a	20	20	20
Maximum Flow (cfh natural gas) ^a	500	1000	1500
Pressure Boost ("w.c.) ^a	b	b	b
Turndown	25:1	50:1	75:1
Primary Voltage	c	c	c
Motor Horsepower	1/4	1/4	1/4
Approximate Weight (Lbs.)	400	400	400

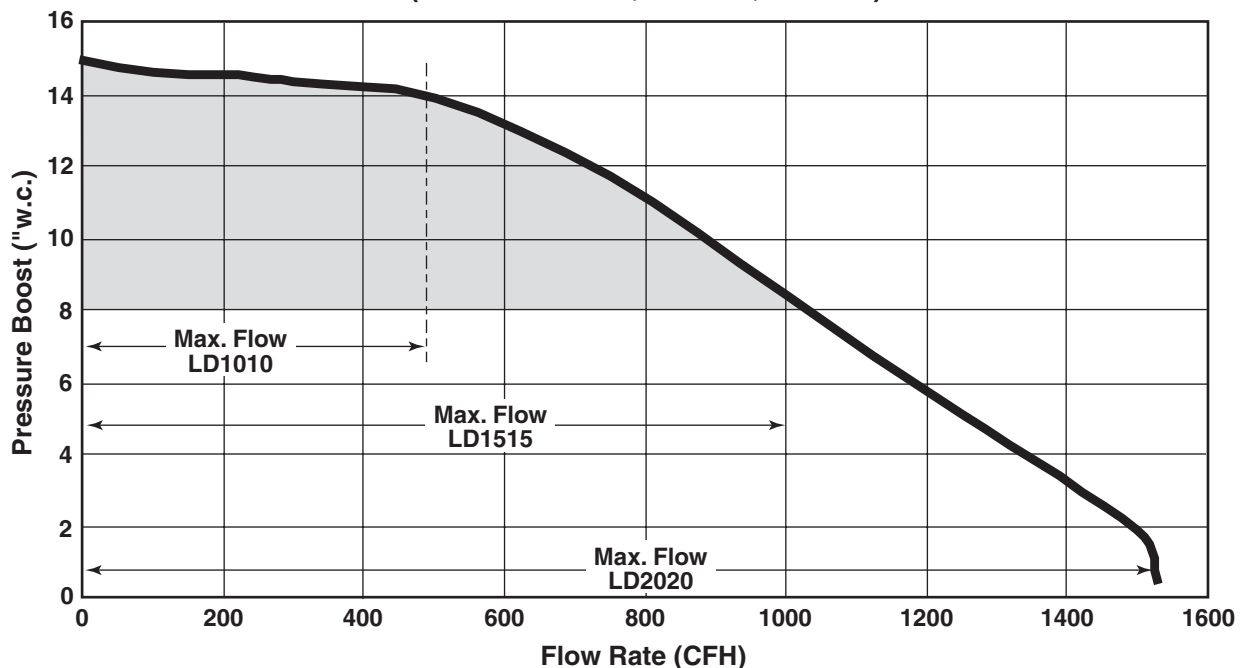
Notes: **a** Ratings are nominal, at standard conditions and depend on customer interface piping.

b Refer to the chart below.

c 115VAC, 1PH, 60HZ.

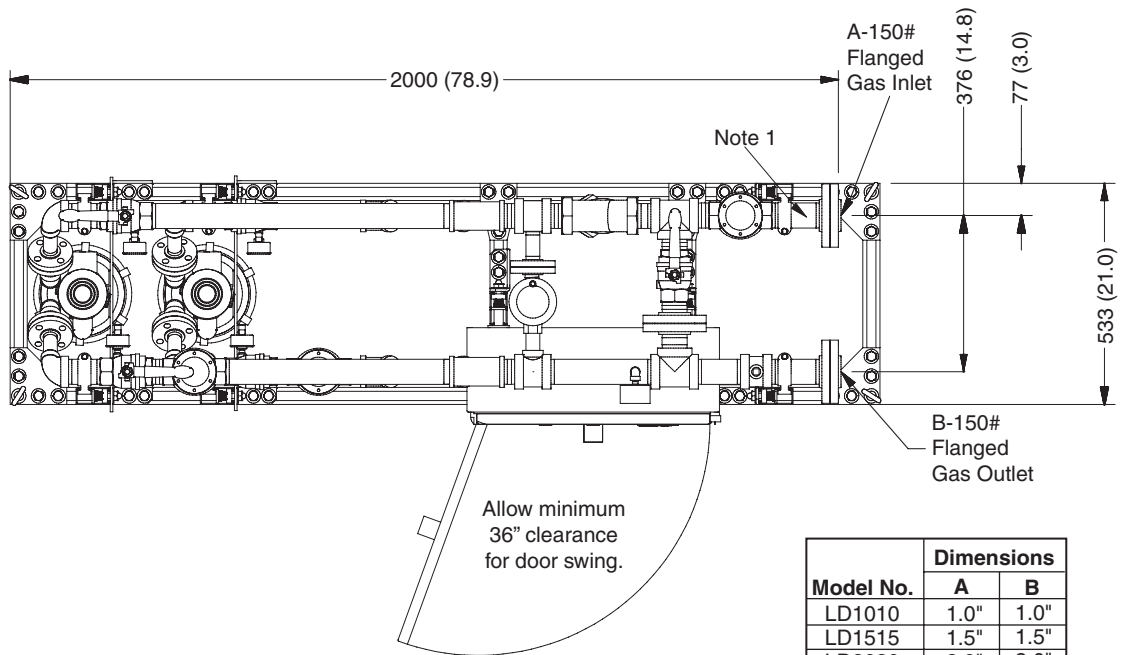
NEMA 12 rating; NEMA 7 rating option available (footprint increases with this option).

Pressure Boost vs Flow
(Models LD1010, LD1515, LD2020)

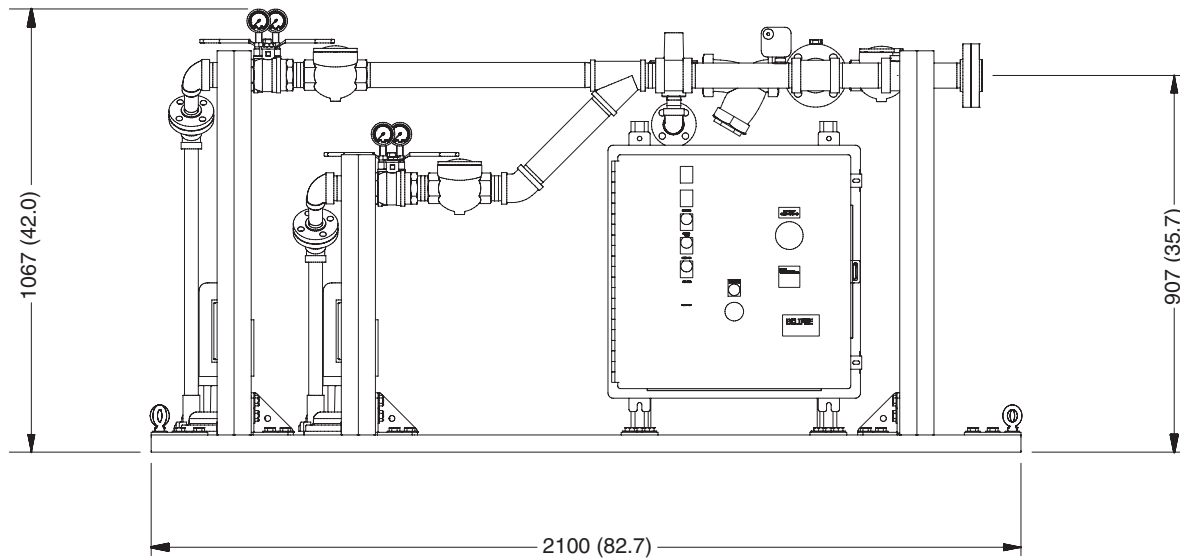


Note: Operation in shaded area requires optional high range spring in the relief regulator.

Dimensions
milimeters (inches)
Low Flow Duplex



Model No.	Dimensions	
	A	B
LD1010	1.0"	1.0"
LD1515	1.5"	1.5"
LD2020	2.0"	2.0"



Note 1 Pressure Switch Kit location when factory mounted
Note 2 When Pressure Switch Kit is supplied loose, it shall be installed in accordance with local codes.



Offered By:

Power Equipment Company
2011 Williamsburg Road
Richmond, Virginia 23231
Phone (804) 236-3800
Fax (804) 236-3882

www.peconet.com